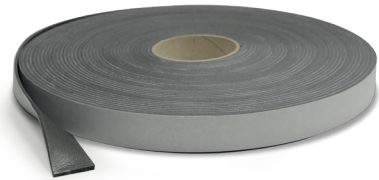


Tapetex Slim

Compressible, closed-cell expanded polyethylene tape for reduced-thickness perimetric joints of desolidarisation.

Tapetex Slim, thanks to its adhesive back and high levels of mouldability, is both practical and simple to apply.



1. Practical and simple to apply
2. Guarantees desolidarisation of the flooring
3. Highly mouldable
4. Height 30 mm

Areas of application

→ Intended use:

Creation of perimetric joints for internal and external self-levelling floors.
Desolidarisation of walls and vertical structures in general.

Do not use on loose, damp or dirty substrates.

Instructions for use

→ Tapetex Slim compressible, closed-cell polyethylene tape is used for perimetric joint of desolidarisation in levelling layers and flooring.
→ To do this, Tapetex Slim has to be laid along the whole perimeter of the room, on the walls and on any other vertical elements protruding from the supporting layer (for example pillars, columns,

installations...). Make sure the tape adheres perfectly to the vertical structures, paying particular attention to corners.
→ Be particularly careful to ensure that Tapetex Slim is also laid continuously over door recesses and patio doors, if there are any.

Certificates and marks



* Émission dans l'air intérieur Information sur le niveau d'émission de substances volatiles dans l'air intérieur, présentant un risque de toxicité par inhalation, sur une échelle de classe allant de A+ (très faibles émissions) à C (fortes émissions).

Abstract

The perimetric joint of desolidarisation is created by laying compressible, closed cell expanded polyethylene tape with adhesive back Kerakoll Tapetex Slim with width 30 mm and thickness 3 mm.

Technical Data compliant with Kerakoll Quality Standard

| | |
|-------------|------------------------|
| Appearance | polyethylene foam roll |
| Colour | anthracite grey |
| Roll width | ≈ 30 mm |
| Roll length | ≈ 25 m |
| Thickness | ≈ 3 mm |

Values taken at +23 °C, 50% R.H. and no ventilation. Data may vary depending on specific conditions at the building site, i.e. temperature, ventilation and absorbency level of the substrate.

Performance

VOC Indoor Air Quality (IAQ) - Volatile organic compound emissions

| | | |
|------------|-----------------------|--------------------------------|
| Conformity | EC 1 plus GEV-Emicode | GEV certified 5877/11.01.02 |
|------------|-----------------------|--------------------------------|

Warning

- Product for professional use
- abide by any standards and national regulations
- the product is an item according to the definitions of the EC Regulation No. 1907/2006 and therefore does not require a Safety Data Sheet

→ for any other issues, contact the Kerakoll Worldwide Global Service +39 0536 811 516 - globalservice@kerakoll.com

| | | |
|---|--|--|
| Kerakoll Quality System <small>ISO 9001 CERTIFIED 1710/0327</small> | Kerakoll Quality System <small>ISO 14001 CERTIFIED 18586-E</small> | Kerakoll Quality System <small>ISO 45001 CERTIFIED 18586-I</small> |
|---|--|--|

The Rating classifications refer to the GreenBuilding Rating Manual 2013. This information was last updated in December 2022; please note that additions and/or amendments to this information may be made over time by KERAKOLL Spa; for the latest version, see www.kerakoll.com. KERAKOLL SpA shall therefore be liable for the validity, accuracy and updating of information provided only when taken directly from its institutional website. The technical data sheet given here is based on our technical and practical knowledge. As it is not possible for us to directly check the conditions in your building yards and the execution of the work, this information represents general indications that do not bind Kerakoll in any way. Therefore, it is advisable to perform a preliminary test to verify the suitability of the product for your purposes.